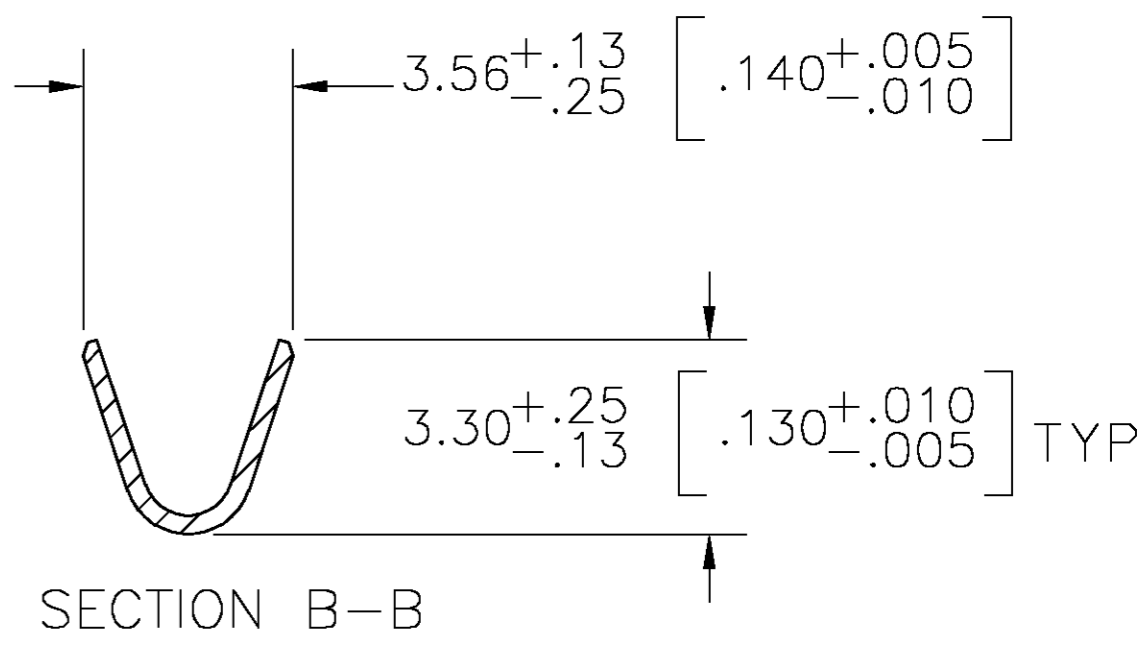
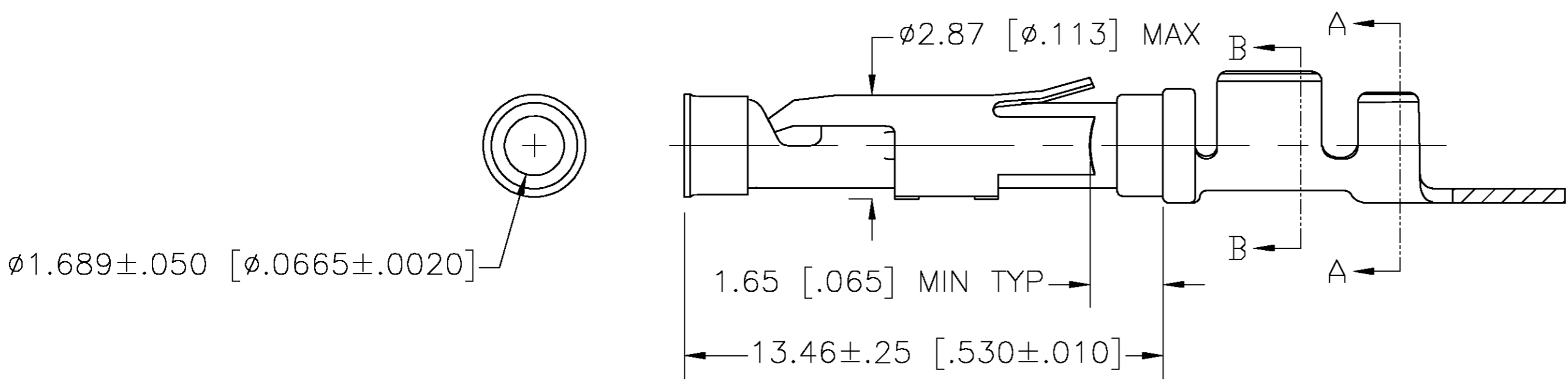
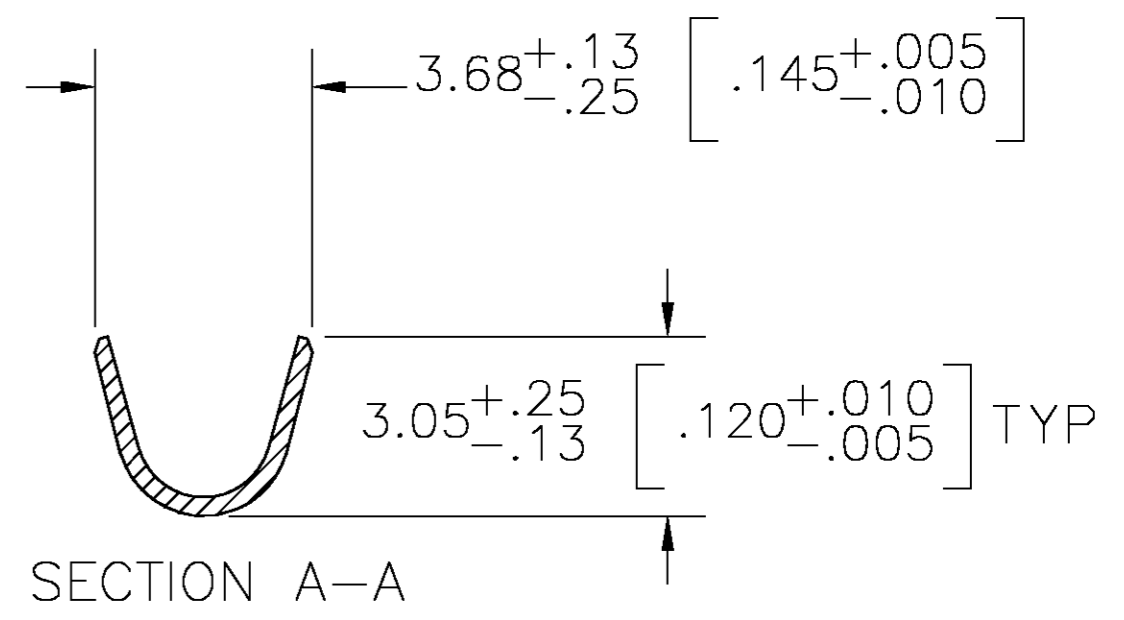
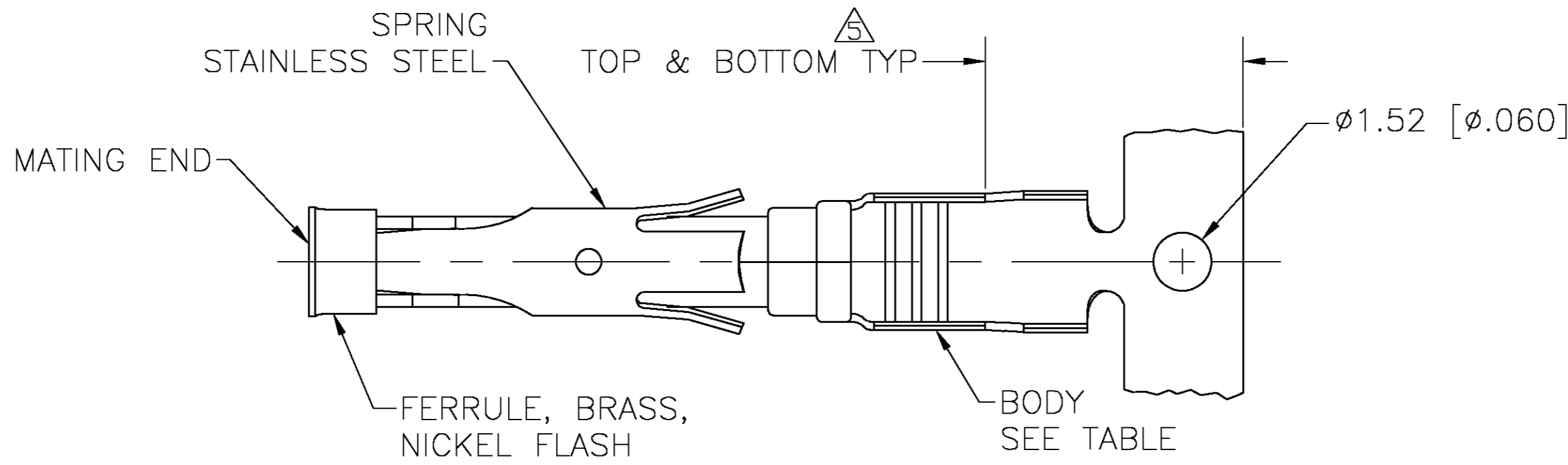


THIS DRAWING IS UNPUBLISHED. RELEASED FOR PUBLICATION
 © COPYRIGHT BY TYCO ELECTRONICS CORPORATION. ALL RIGHTS RESERVED.

| LOC | | DIST | | REVISIONS | | | |
|-----|-----|-------------|--------------------------|-----------|------|----|--|
| P | LTR | DESCRIPTION | DATE | DWN | APVD | | |
| | | AD | REVISED PER 0G3B-0956-04 | 11/18/04 | SS | GS | |



- ① 0.76 μm [.000030] MIN GOLD PER MIL-G-45204 ON MATING END FOR A LENGTH OF 5.08 [.200] MIN WITH GOLD FLASH ON THE REMAINDER OVER 0.76 μm [.000030] MIN NICKEL PER QQ-N-290.
- ② 1.27 μm [.000050] MIN TIN-LEAD PER MIL-T-10727 OVER 0.76 μm [.000030] MIN NICKEL PER QQ-N-290.
- ③ 0.76 μm [.000030] MIN GOLD PER MIL-G-45204 ON MATING END FOR A LENGTH OF 5.08 [.200] MIN WITH A UNIFORM GRADIENT TO 0.25 [.000010] MIN GOLD PER MIL-G-45204 ON THE REMAINDER OVER 0.76 μm [.000030] MIN NICKEL PER QQ-N-290.
- ④ 0.38 μm [.000015] MIN GOLD PER MIL-G-45204 ON MATING END FOR A LENGTH OF 5.08 [.200] MIN WITH GOLD FLASH ON THE REMAINDER OVER 0.76 μm [.000030] MIN NICKEL PER QQ-N-290.
- ⑤ GOLD PLATING NEED NOT APPEAR IN THIS AREA.
- ⑥ REVERSE REELED FOR MINI-APPLICATOR.
- ⑦ WIRE RANGE 18-14 AWG. INSULATION RANGE 2.03 [.080]-2.54 [.100].
- ⑧ 0.38 μm [.000015] MIN GOLD PER MIL-G-45204 ON MATING END FOR A LENGTH OF 5.08 [.200] MIN, 1.27 μm [.000050] MIN TIN-LEAD PER MIL-T-10727 FOR A LENGTH OF 5.69 [.224] MIN ON OPPOSITE END, BOTH OVER 1.27 μm [.000050] MIN NICKEL PER QQ-N-290 ON ENTIRE CONTACT.
- ⑨ 1.27 μm [.000050] MIN TIN PER MIL-T-10727 OVER 0.76 μm [.000030] MIN NICKEL PER QQ-N-290.

| | | | | |
|----------|-------------|-----------------|-----------------|-----------|
| ⑥ | ⑨ | BRASS | - | 2-66358-2 |
| ⑥ | ⑨ | CU-NI ALLOY | 1-66360-6 | 2-66358-1 |
| ⑥ | ② | CU-NI ALLOY | 1-66360-5 | 2-66358-0 |
| ⑥ | ① | CU-NI ALLOY | 1-66360-4 | 1-66358-9 |
| ⑥ | ⑨ | PHOSPHOR BRONZE | - | 1-66358-8 |
| STANDARD | ⑨ | BRASS | 1-66360-2 | 1-66358-7 |
| ⑥ | ⑨ | BRASS | 1-66360-2 | 1-66358-6 |
| OBSOLETE | ⑥ | BRASS | 66360-9 | 1-66358-5 |
| ⑥ | ② | BRASS | - | 1-66358-4 |
| ⑥ | ① | PHOSPHOR BRONZE | 66360-8 | 1-66358-3 |
| ⑥ | ② | PHOSPHOR BRONZE | 66360-7 | 1-66358-2 |
| ⑥ | ① | BRASS | 66360-4 | 1-66358-0 |
| ⑥ | ② | BRASS | 66360-3 | 66358-9 |
| ⑥ | ② | BRASS | 66360-2 | 66358-6 |
| ⑥ | ② | BRASS | 66360-1 | 66358-5 |
| STANDARD | ① | BRASS | 66360-4 | 66358-4 |
| OBSOLETE | STANDARD | BRASS | 66360-3 | 66358-3 |
| STANDARD | ② | BRASS | 66360-2 | 66358-2 |
| STANDARD | ③ | BRASS | 66360-1 | 66358-1 |
| REELING | BODY FINISH | BODY MATERIAL | LOOSE PIECE REF | PART NO. |

THIS DRAWING IS A CONTROLLED DOCUMENT.

| | |
|--|--|
| DWN V. FURLER 23JUL2003 | Tyco Electronics Corporation Harrisburg, PA 17105 |
| CHK G. STEINHAUER 23JUL03 | |
| APVD G. STEINHAUER 23JUL03 | |
| PRODUCT SPEC | |
| MATERIAL SEE CALLOUTS | NAME SOCKET ASSEMBLY, .062, TYPE III+ |
| TOLERANCES UNLESS OTHERWISE SPECIFIED: | SIZE A2 |
| 0 PLC ± - | CAGE CODE 00779 |
| 1 PLC ± - | DRAWING NO C=66358 |
| 2 PLC ± 0.13 [.005] | RESTRICTED TO |
| 3 PLC ± - | SCALE 8:1 |
| 4 PLC ± - | SHEET 1 OF 1 |
| ANGLES ± - | REV AD |
| FINISH SEE CALLOUTS | CUSTOMER DRAWING |